

# RAMPART DEFENDER

The Defender is the only mobile shielding solution that protects the interventional team. Designed for simple repositioning and adaptability, the Defender provides robust, total body protection from radiation while allowing interventional teams to safely and confidently #ShedTheLead

**>99%**  
Radiation  
Attenuation.<sup>1</sup>  
Shown here with the  
Rampart Bunker and  
Shadow shields.

- 1mm lead equivalent shields
- Mobile unit with ease 2-minute set-up
- Allows multiple access points
- Unlimited C-ARM views/angles
- Patient always in view
- Easy removal in emergencies
- Lead-free



**SHED  
THE  
LEAD**

Contact our team



MKT084-REV A



**GUARDIAN**

Floor-Mounted or Ceiling-Mounted

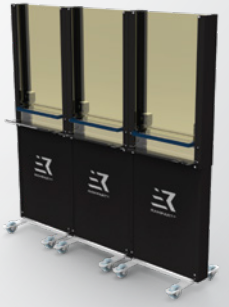
**DEFENDER**



**TOTAL TEAM PROTECTION**  
Discover the Rampart Portfolio



**SHADOW**



**SENTRY**



**BUNKER**

