


RAMPART SENTRY


The Sentry is a highly mobile radiation shield designed to provide personal protection during interventional procedures. With its retractable shield and lightweight design, the Sentry ensures constant protection from radiation without the physical strain of lead aprons. Its quick deployment and easy maneuverability make it a dependable guard, offering radiation safety at every turn.



Height adjustable for ease of patient access.

Full body protection for anyone, anywhere in the room.

- Anesthesiologist
- Echo Tech
- Circulating Nurses
- And anyone else in the cath lab



Modular design allows combining for extended radiation barrier.

SHED THE LEAD



Contact our team



GUARDIAN

Floor-Mounted or Ceiling-Mounted

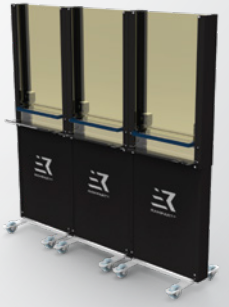
DEFENDER



TOTAL TEAM PROTECTION
Discover the Rampart Portfolio



SHADOW



SENTRY



BUNKER

